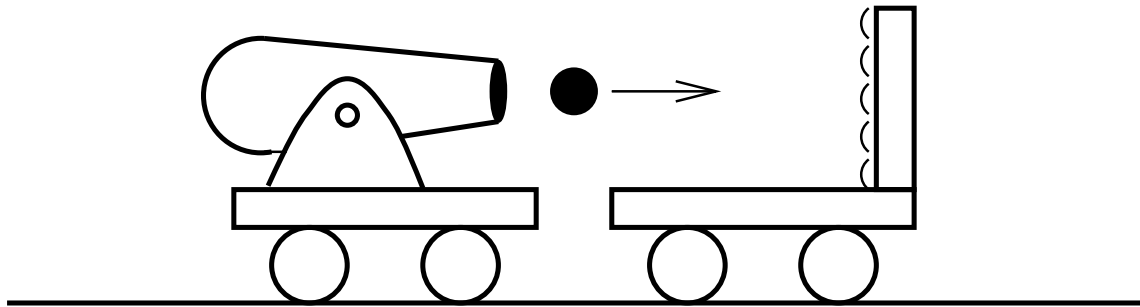


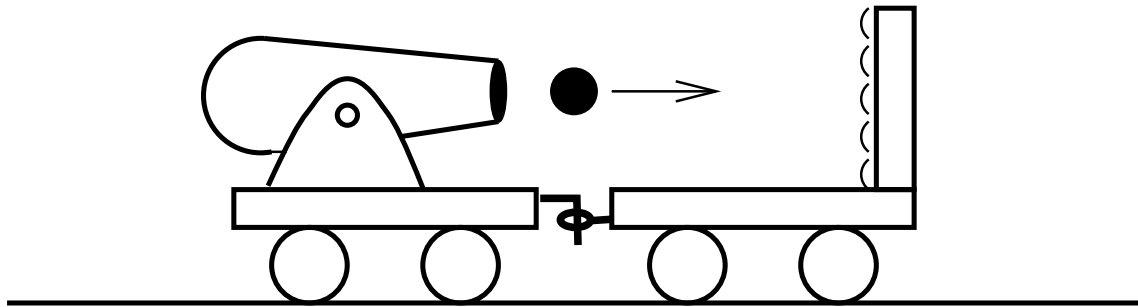
A canon mounted on one railway car fires a canon ball at another railway car. The other car has a cushion which stops (catches) the canon ball.



What happens to both cars after the canon has been fired and the canon ball has been caught?

1. The canon moves left while the other car moves right.
2. Both cars move left.
3. Both cars move right.
4. Both cars are stopped.

A canon mounted on one railway car fires a canon ball at another railway car. The other car has a cushion which catches the canon ball. Now the two cars are connected!



What happens to both cars after the canon has been fired and the canon ball has been caught?

1. The canon moves left while the other car moves right.
2. Both cars move left.
3. Both cars move right.
4. Both cars are stopped.